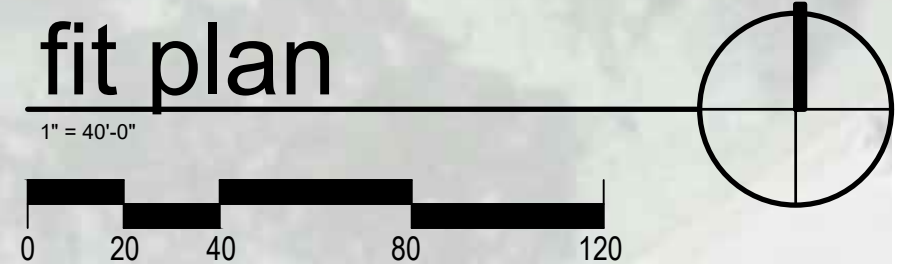
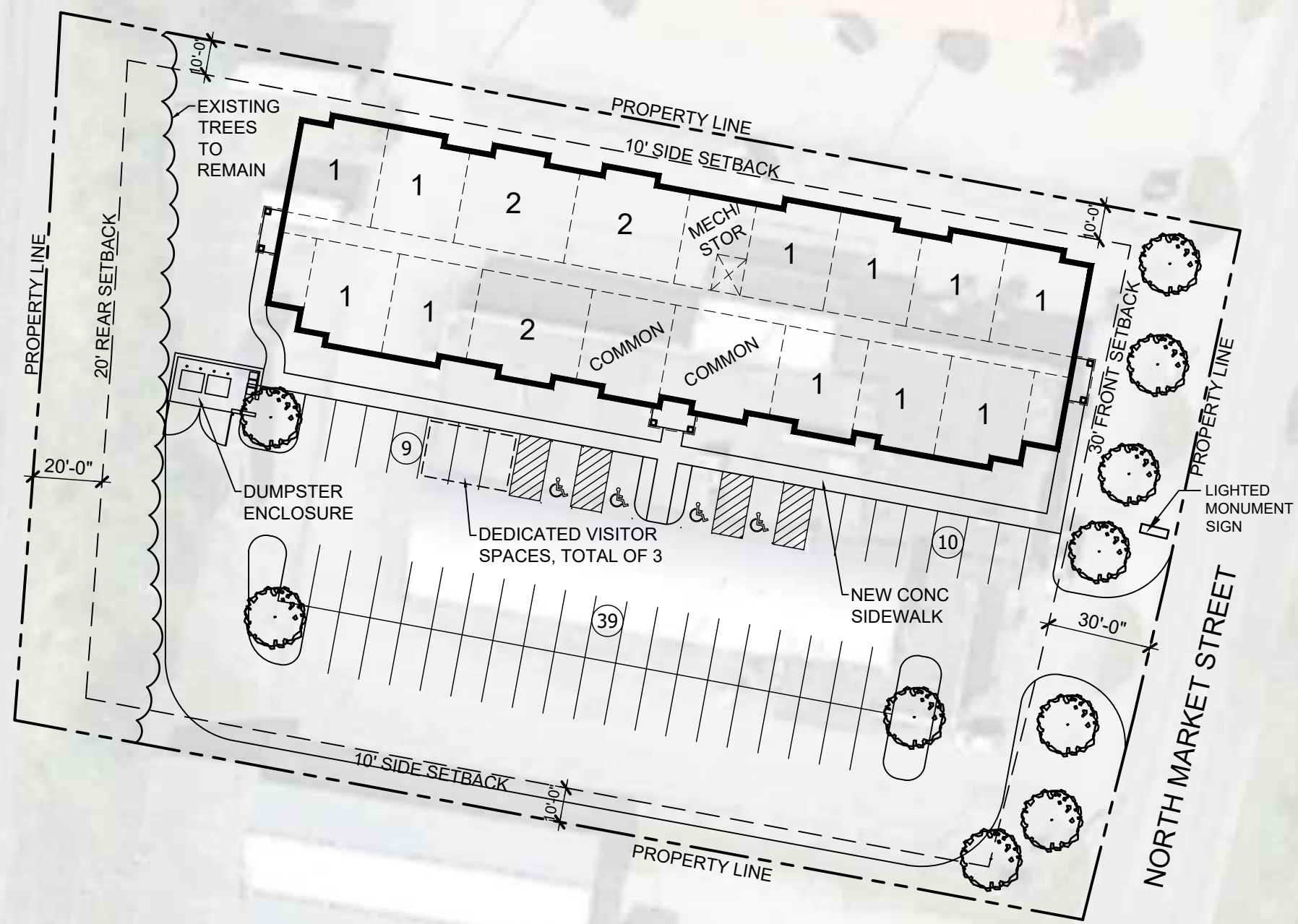


<b>PROPOSED UNIT MIX:</b>	<b>TOTAL:</b>
1 BEDROOM / 1 BATH - 35 UNITS	46 UNITS
2 BEDROOM / 1 BATH - 11 UNITS	3-STORY BUILDING
	45,540 S.F.
SITE AREA =	1.54 ACRES
SITE PARKING =	58 SPACES (4 ACCESSIBLE)



**PIATT LOFTS**  
monticello, illinois

12.02.19  
preliminary site plan / landscape plan - 01



# front elevation

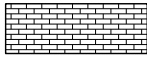

1/16" = 1'-0"

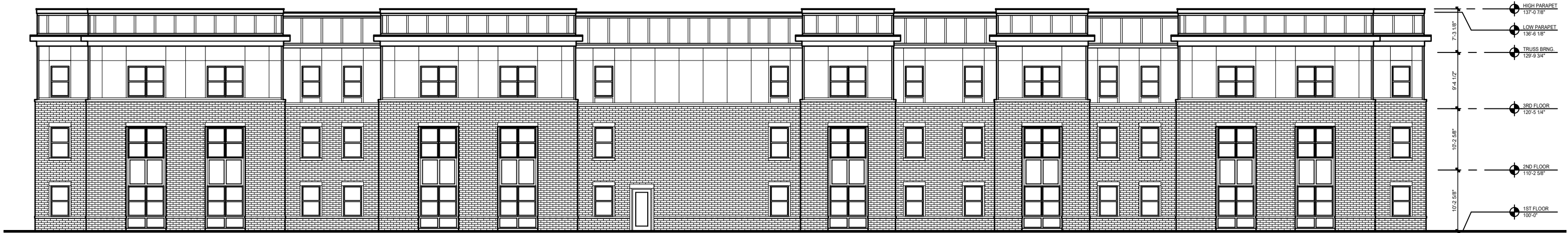


# side elevation

1/16" = 1'-0"

**EXTERIOR FINISH LEGEND**

-  HATCHING INDICATES NEW MODULAR FACE BRICK (BR-1)
-  INDICATES NEW FIBER CEMENT PANELS AND TRIM (FCP-1)



# rear elevation

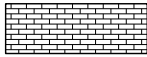
1/16" = 1'-0"




# side elevation

1/16" = 1'-0"

**EXTERIOR FINISH LEGEND**

 HATCHING INDICATES NEW MODULAR FACE BRICK (BR-1)

 INDICATES NEW FIBER CEMENT PANELS AND TRIM (FCP-1)